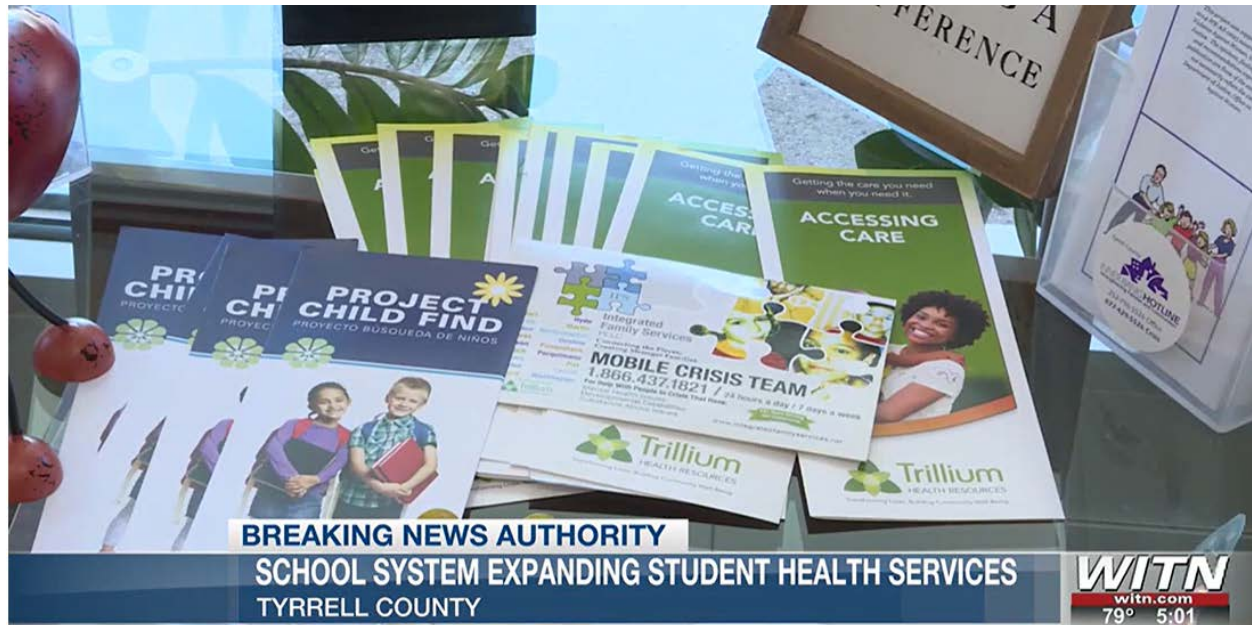




Tyrrell County Schools collaborating with local partners to expand student health services



Tyrrell County Schools collaborating with local partners to expand student health services

By WITN Web Team and [Amarachi Uche](#)

Published: May 20, 2025 at 9:03 AM EDT | Updated: 21 hours ago

TYRRELL COUNTY, N.C. (WITN) - Tyrrell County Schools is offering more healthcare services to its students through a variety of local partnerships.

Growing up in Tyrrell County, Amar Spencer remembers affordable healthcare access being a problem.

“Unfortunately, not everybody has the resources that we can, to get the best healthcare available for us, so sometimes we’re often stuck with getting what we can get,” Spencer said.

Tyrrell County Schools is looking to fix that problem. On Tuesday, the school district announced multiple partnerships to improve access to essential health services for students and families.

“This is a rural area that doesn’t have access to a lot of medical care and dental care,” Tyrrell County Student Services Director Dr. Jennifer Mason said. “So this is not just for our schools, but it’s for our community as a whole.”

The school system is working with Washington Regional Medical Center, Shriners Children’s, the Martin-Tyrrell-Washington District Health Department and Trillium Health Resources to expand medical, dental and behavioral health services to students living in rural communities.

<https://www.witn.com/2025/05/20/tyrrell-county-schools-collaborating-with-local-partners-expand-student-health-services/>



Through these partnerships, students will have the opportunity to access primary care and telehealth services without the need to travel far away for a physical exam.

According to Tyrrell County Schools, the partnership with Washington Regional Medical Center and Shriners Children's is in the planning stages. They continue to assess their next steps to ensure better care for students.

The school system's partnership with the Martin-Tyrrell-Washington District Health Department will additionally bring a mobile dental unit, named The Molar Express, to every Tyrrell County school.

"That includes X-rays, full dental care, and they will come right to our schools," Mason said.

Tyrrell County Schools will also continue its partnership with Trillium Health Resources to support students' mental and behavioral health through additional telehealth options and treatment services. Columbia Early College High School Principal Brianna Williams says this partnership is important.

"Mental health is a hot topic, especially since COVID, when students were feeling isolated and needed additional services," Williams said.

In addition, Mason says Tyrrell County Schools is working to provide sports physicals for students as well as physicals and drug testing for staff members.

The school district is taking these bold steps with the goal of addressing students' healthcare needs.

"Any opportunity that we have to bring rural healthcare and partnerships to our students and our families is a wonderful opportunity," Williams said.

For more information about the Tyrrell County Schools' efforts to expand healthcare in the community, you can check out their [website](#).

Copyright 2025 WITN. All rights reserved.