

Opioid Use Disorder Medication Assisted Treatment Resource Manual

With Resources Specific to Pregnant Women

Updated: October 2017
Mary Bartek, MSW, LCSW, C-CATODSW
Mary.Bartek@TrilliumNC.org

Transforming Lives



Trillium
HEALTH RESOURCES

Table of Contents

Methadone Providers	5	
The Center of Hope of Myrtle Beach		5
Coastal Horizons Center		5
CRC Health - Carolina Treatment Center of Goldsboro		5
Elizabeth City Treatment Center		5
(GRC) Greenville Recovery Center, LLC		6
Jacksonville Treatment Center		6
New Hanover Metro Treatment Center		6
PORT Health Services		6
Reflections of Hope		7
Rocky Mount Treatment Center		7
Vivitrol/Naltrexone Providers	8	
Addictionologist and Pain Management		8
Agape Community Health Center - Washington		8
Agape Community Health Center - Williamston		8
Anjan Medical, Coastal MD's		8
Carter Clinic		9
Coastal Horizons Center		9
Delta Behavioral Health		9
Elizabeth City Treatment Center		9
Haven		10
Jacksonville Treatment Center		10
Pelican Family Medicine		10
PORT Health Services		10
RHA		10
Triad Behavioral Resources		11
Wilmington Treatment Center		11
Wrightsville Family Practice		11
Buprenorphine Providers (by COUNTY)	12	
Beaufort County		12
Agape Community Health Center		12
Pamlico Wellness Center		12
PORT Health Services - Washington		12
Bertie County		12
Eastern Carolina Family Practice		12
Brunswick County		13
Brunswick Cardiology		13
Coastal Horizons Center		13
Capeside Psychiatry and Addiction Care		13
Coastal Southeastern United Care - Bolivia		13
Palms Health and Wellness		14
Waterford Wellness		14
Carteret County		15
Arthritis and Rehabilitation Medicine, PLLC		15
Carolinas Center for Surgery		15
PORT Health Services - Morehead City		15
(FMRC) Family Medicine & Rehabilitation Center		15
		2

Craven County	16
DAE Health Services	16
Community Wellness Center	16
PORT Health Services - New Bern	16
Dare County	17
Duck Medical	17
PORT Health Services - Nags Head	17
Right Path	17
Halifax County	18
Roanoke Valley Psychiatric Associates	18
Hertford County	18
PORT Health Services - Ahoskie	18
Martin County	18
Agape Community Health Center	18
Nash County	19
Briar Creek Pain and Spine - Rocky Mount	19
Rocky Mount Treatment Center	19
New Hanover County	20
Addictionologist and Pain Management	20
Anjan Medical, Coastal MD's	20
Ave Maria Family Practice	20
Capeside Psychiatry and Addiction Care	20
Carolina Beach Counseling	21
Carter Clinic	21
Coastal Horizons Center (CHC)	21
Haven	21
New Hanover Metro Treatment Center	21
Odibo Medical Group	22
Pelican Family Medicine	22
PORT Health Services - Wilmington	22
Porters Neck Counseling	22
Reflections of Hope	23
Triad Behavioral Resources	23
Trinity Wellness Center	23
Wilmington Treatment Center	23
Onslow County	24
Capeside Psychiatry and Addiction Care	24
Coastal Carolina Neuropsychiatric Center (CCNC)	24
Jacksonville Treatment Center	24
Palms Wellness Center	24
Pediatric Urgent Care	24
PORT Health Services - Jacksonville	25
Pasquotank County	25
The Care Centers	25
Elizabeth City Treatment Center	25
PORT Health Services - Elizabeth City	25
Pitt County	26
Briar Creek Pain and Spine - Greenville	26

Greenville Psychiatric Associates	26
PORT Health Services - Greenville	26
PORT Health Services - Winterville	26
Buprenorphine Providers (Surrounding Counties)	27
Columbus County	27
RHA	27
Briar Creek Pain and Spine - Whiteville	27
Lenior County	27
PORT Health Services - Kinston	27
(FMRC) Family Medicine & Rehabilitation Center	27
Lori Scott Family Care	28
Wayne County	28
CRC Health - Carolina Treatment Center of Goldsboro	28
(FMRC) Family Medicine & Rehabilitation Center	28
Wayne Family Medical Center	28
South Carolina (Horry County)	29
The Center of Hope of Myrtle Beach	29
Naloxone Distribution and Syringe Exchange	30
Introduction to Resources for Pregnant Women	31
Additional Resources for Pregnant Women	32
Pregnancy and Opioid Exposure Guidance Document	32
North Carolina Perinatal and Maternal Substance Use Project	32
Community Care of North Carolina: Management of Substance Use in Pregnancy	32
Additional Resources	33
Regional Referral Form (for admission to a State Psychiatric Hospital or ADATC)	33
Mobile Crisis	33

Methadone Providers

The Center of Hope of Myrtle Beach		www.carolinatreatmentcenters.com
CONTACT (843) 903- 6212 104 George Bishop Parkway Myrtle Beach, SC 29579	HOURS OF OPERATION Mon - Fri 5 am to 12 pm Sat - 6 am to 10 am	RATES AND INFORMATION Self Pay Rates: \$13 Each visit \$80 Per week <ul style="list-style-type: none"> • Price will increase as dosage increases • Price includes counseling and medication
REQUIREMENTS FOR TREATMENT Contact provider for more information	ACCEPTABLE PAYER SOURCES Self-pay only	

Coastal Horizons Center		www.coastalhorizons.org
CONTACT (910) 343-0145 615 Shipyard Blvd. Wilmington, NC 28412	HOURS OF OPERATION Mon - Fri 8 am to 4 pm	RATES AND INFORMATION Sliding fee scale based on income and funding availability.
REQUIREMENTS FOR TREATMENT Please contact provider for more information	ACCEPTABLE PAYER SOURCES Medicaid, Medicare, private insurance, self-pay; Funding for uninsured may be available.	

CRC Health - Carolina Treatment Center of Goldsboro		http://www.sandhillsctc.com/location/goldsboro/
CONTACT (919) 583-9329 1700 E. Ash St. Suite 201 Goldsboro, NC 27530	HOURS OF OPERATION Mon-Sat 5am to 2pm Sun 5am to 7am	RATES AND INFORMATION Self Pay Rates: \$12.75 per day
REQUIREMENTS FOR TREATMENT Contact provider for more information	ACCEPTABLE PAYER SOURCES Self-pay and some private insurances	

Elizabeth City Treatment Center		https://www.southeasternreatmentcenters.com/
CONTACT (252) 333-1540 105 Medical Center Dr. Elizabeth City, NC 27909	HOURS OF OPERATION Mon-Fri 5:30 am - 2:30 pm, Sat-Sun 6 - 11 am	RATES AND INFORMATION Self-Pay Rates: \$13/day methadone
REQUIREMENTS FOR TREATMENT Contact provider for more information	ACCEPTABLE PAYER SOURCES Self-Pay Only	

(GRC) Greenville Recovery Center, LLC

CONTACT	HOURS OF OPERATION	RATES AND INFORMATION
(252) 353-2555 150 E. Arlington Blvd Greenville, NC 27858	Mon - Friday 530am to 1130am Sat - Sun 7am to 930am	Self Pay Rates: \$10 per day
REQUIREMENTS FOR TREATMENT		ACCEPTABLE PAYER SOURCES
Must attend counseling, 2 groups and two individual sessions per month		Self-pay only

www.jacksonvilletreatmentcenter.com

Jacksonville Treatment Center

CONTACT	HOURS OF OPERATION	RATES AND INFORMATION
(910) 347-2205 806 Bell Fork Rd. Jacksonville, NC 28540	Mon - Fri 6 am to 12 pm Sat 7 am to 9 am Sun 8 am to 10 am	Self Pay Rates: \$11 Methadone Mon - Sat \$15 Methadone Sun
REQUIREMENTS FOR TREATMENT		ACCEPTABLE PAYER SOURCES
Must attend counseling 2 times per month		Self-pay only

www.methadonetreatment.com

New Hanover Metro Treatment Center

CONTACT	HOURS OF OPERATION	RATES AND INFORMATION
(910) 251-6644 1611 Castle Hayne Rd. Bld. C Wilmington, NC 28401	Open 7 days a week Contact provider for more information	Self Pay Rates: \$15 Each visit Price includes counseling and medication
REQUIREMENTS FOR TREATMENT		ACCEPTABLE PAYER SOURCES
Must attend counseling 2 times per month		Self-pay only

<https://www.porthhealthservices.org/>

PORT Health Services

CONTACT	HOURS OF OPERATION	RATES AND INFORMATION
Greenville - (252) 353- 5346 New Bern - (252) 672-8742	Greenville Office Hours: Mon - Fri 6 am to 5 pm All other offices: Mon - Fri 8 am to 4 pm	Sliding fee scale based on income
REQUIREMENTS FOR TREATMENT		ACCEPTABLE PAYER SOURCES
Based on assessment		Medicaid, private insurance, self-pay; Funding for uninsured may be available

Reflections of Hope

<https://www.reflectionsofhope.info/>

CONTACT

(910)782-8752
33 Darlington Ave
Wilmington, NC 28403

HOURS OF OPERATION

Mon - Fri 5:30am to noon
Sat-Sun 7am - 10am

RATES AND INFORMATION

Self Pay Rates:
\$65 admission fee
\$13/day methadone

REQUIREMENTS FOR TREATMENT

Must attend at least 2 therapy and 2 group sessions per month.

ACCEPTABLE PAYER SOURCES

Self-pay only

Rocky Mount Treatment Center

CONTACT

(252) 972-4357
104 Zebulon Court
Rocky Mount, NC 27804

HOURS OF OPERATION

Contact provider for details

RATES AND INFORMATION

Self Pay Rates:
\$11/day Monday-Saturday
\$15 on Sunday

REQUIREMENTS FOR TREATMENT

Contact provider for more information

ACCEPTABLE PAYER SOURCES

Self-pay only

Vivitrol/Naltrexone Providers

Please visit the following website (www.vivitrol.com) for the most up to date Vivitrol provider list.

Addictionologist and Pain Management		George Scontsas, M.D.
CONTACT (910) 254-1414 1201 Medical Center Dr Wilmington, NC 28401	HOURS OF OPERATION Mon - Wed 9 am to 3 pm Thurs Noon to 4 pm	RATES AND INFORMATION Contact provider for details
REQUIREMENTS FOR TREATMENT Contact provider for more information	ACCEPTABLE PAYER SOURCES Medicare, Tricare, private insurance, self-pay	

Agape Community Health Center - Washington		https://www.agapechc.org/
CONTACT (252) 940-0602 20 W M.L.K. Jr Dr, Washington, NC 27889	HOURS OF OPERATION Mon - Fri 8 am - 5 pm Sat 8am - 1pm On site Pharmacy Mon - Fri *Probuphine is also offered*	RATES AND INFORMATION Contact provider for details
REQUIREMENTS FOR TREATMENT Based on Assessment	ACCEPTABLE PAYER SOURCES Medicaid, Medicare, Tricare, private insurance, self-pay; Funding for uninsured may be available	

Agape Community Health Center - Williamston		https://www.agapechc.org/
CONTACT (252) 789-0401 1130 Godwin Ave, Williamston, NC 27892	HOURS OF OPERATION Mon - Fri 8 am - 5 pm On site Pharmacy Mon - Fri *Probuphine is also offered*	RATES AND INFORMATION Contact provider for details
REQUIREMENTS FOR TREATMENT Based on Assessment	ACCEPTABLE PAYER SOURCES Medicaid, Medicare, Tricare, private insurance, self-pay; Funding for uninsured may be available	

Anjan Medical, Coastal MD's		Dr. Njapa www.coastalmds.com
CONTACT (910) 793-4311 1098 Medical Center Dr. Suite A Wilmington, NC 28401	HOURS OF OPERATION Contact provider for more information	RATES AND INFORMATION Contact provider for details
REQUIREMENTS FOR TREATMENT Contact provider for more information	ACCEPTABLE PAYER SOURCES Medicaid, Medicare, Tricare, private insurance, self-pay	

Carter Clinic		https://www.kingdom1medicine.com/
CONTACT (910) 550-2332 603 Eastwood Rd, Wilmington, NC 28403	HOURS OF OPERATION Contact provider for details	RATES AND INFORMATION Contact provider for details
REQUIREMENTS FOR TREATMENT Based on assessment	ACCEPTABLE PAYER SOURCES Medicaid, self-pay, private insurance; contact provider for details	

Coastal Horizons Center		www.coastalhorizons.org
CONTACT (910) 754-4515 120 Coastal Horizons Dr Shallotte, NC 28470	HOURS OF OPERATION Brunswick Hours: Mon - Fri 8 am to 7 pm	RATES AND INFORMATION Sliding fee scale based on income and funding availability
(910) 343-0145 615 Shipyard Blvd Wilmington, NC 28412	New Hanover Hours: Mon - Fri 8 am to 4 pm	
REQUIREMENTS FOR TREATMENT Based on assessment	ACCEPTABLE PAYER SOURCES Medicaid, Medicare, private insurance, self-pay; Funding for uninsured may be available.	

Delta Behavioral Health		www.deltadbt.com
CONTACT (910) 343-6890 1606 Physicians Drive Wilmington, NC 28401	HOURS OF OPERATION Mon - Thu 8 am to 5 pm Fri 8 am to 4 pm Other hours by appointment	RATES AND INFORMATION Will accept persons transferring on Vivitrol with documented treatment.
REQUIREMENTS FOR TREATMENT Must attend counseling with Delta Behavioral Health	ACCEPTABLE PAYER SOURCES Medicaid, private insurance	

Elizabeth City Treatment Center		https://www.southeastertreatmentcenters.com/
CONTACT (843) 903- 6212 105 Medical Center Dr. Elizabeth City, NC 27909	HOURS OF OPERATION Mon-Fri 5:30 am - 2:30 pm, Sat-Sun 6 - 11 am	RATES AND INFORMATION Self Pay Rates:
REQUIREMENTS FOR TREATMENT Contact provider for more information	ACCEPTABLE PAYER SOURCES Self-pay only	

Haven		Dwight Lysne, M.D. MDiv
CONTACT 20 S 16 th St Wilmington, NC 28401 Ph: (910) 399-3927 Fax: (910) 399-3928	HOURS OF OPERATION Mon - Thursday 9 am to 12 pm (Walk-in)	RATES AND INFORMATION Contact provider for details
REQUIREMENTS FOR TREATMENT This program is Christian based and clients must attend faith based groups	ACCEPTABLE PAYER SOURCES Medicaid, Medicare, self-pay	

Jacksonville Treatment Center		www.jacksonvilletreatmentcenter.com
CONTACT (910) 347-2205 806 Bell Fork Rd. Jacksonville, NC 28540	HOURS OF OPERATION Mon - Fri 6 am to 12 pm Sat 7 am to 9 am Sun 8 am to 10 am	RATES AND INFORMATION Contact provider for details
REQUIREMENTS FOR TREATMENT Must attend counseling 2 times per month	ACCEPTABLE PAYER SOURCES Contact provider for more information	

Pelican Family Medicine		www.pelicanmed.com
CONTACT (910) 332-7900 6132 Carolina Beach Rd #8 Wilmington, NC 28403	HOURS OF OPERATION Mon - Fri 8:30 am to 5 pm	RATES AND INFORMATION Contact provider for details
REQUIREMENTS FOR TREATMENT Contact provider for more information	ACCEPTABLE PAYER SOURCES Medicaid if Pelican is primary care	

PORT Health Services		https://www.porthhealthservices.org/
CONTACT Greenville - (252) 353- 5346 New Bern - (252) 672-8742 Wilmington - (910) 763-6499	HOURS OF OPERATION Contact provider for details	RATES AND INFORMATION Contact provider for details
REQUIREMENTS FOR TREATMENT Based on assessment	ACCEPTABLE PAYER SOURCES Medicaid, private insurance, self-pay; Funding for uninsured may be available	

RHA		
CONTACT (910) 632-2191 2023 S. 17 th Street Wilmington, NC 28401	HOURS OF OPERATION Contact provider for more information	RATES AND INFORMATION Contact provider for details
REQUIREMENTS FOR TREATMENT Contact provider for more information	ACCEPTABLE PAYER SOURCES Contact provider for more information	

Triad Behavioral Resources<https://www.triadbehavioralresources.com/>

CONTACT (910) 765-1003 201 N Front St. Suite 508 Wilmington, NC 28412	HOURS OF OPERATION Contact provider for more information	RATES AND INFORMATION Contact provider for details
---	--	--

REQUIREMENTS FOR TREATMENT Contact provider for more information	ACCEPTABLE PAYER SOURCES Private insurance, self-pay, contact provider for more information
--	---

Wilmington Treatment Centerwww.wilmingtontreatment.com

CONTACT (910) 793-5662 2520 Troy Dr Wilmington, NC 28401	HOURS OF OPERATION Mon - Fri 8:30 to 5 pm	RATES AND INFORMATION Contact provider for details
--	---	--

REQUIREMENTS FOR TREATMENT Contact provider for more information	ACCEPTABLE PAYER SOURCES Medicare, private insurance, self-pay
--	--

Wrightsville Family Practice

CONTACT (910) 792-1231 1414 S. 39 th St Wilmington, NC 28403	HOURS OF OPERATION Contact provider for more information	RATES AND INFORMATION Contact provider for details
---	--	--

REQUIREMENTS FOR TREATMENT Contact provider for more information	ACCEPTABLE PAYER SOURCES Contact provider for more information
--	--

Buprenorphine Providers (by COUNTY)

Beaufort County

Agape Community Health Center		https://www.agapechc.org/
CONTACT (252) 940-0602 20 W M.L.K. Jr Dr, Washington, NC 27889	HOURS OF OPERATION Mon - Fri 8 am - 5 pm Sat 8am - 1pm On site Pharmacy Mon - Fri	RATES AND INFORMATION Contact provider for details
Probuphine is also offered		
REQUIREMENTS FOR TREATMENT Based on Assessment	ACCEPTABLE PAYER SOURCES Medicaid, Medicare, Tricare, private insurance, self-pay; Funding for uninsured may be available	

Pamlico Wellness Center		
CONTACT (252) 623-2116 1102 N. Brown St Washington, NC 27889	HOURS OF OPERATION Contact provider for details	RATES AND INFORMATION Contact provider for details
REQUIREMENTS FOR TREATMENT Contact provider for details	ACCEPTABLE PAYER SOURCES Medicare, Medicaid, Private Insurance, Self-pay	

PORT Health Services - Washington		https://www.porthhealthservices.org/
CONTACT (252) 975-8852 1379 Cowell Farm Rd Washington, NC 27889	HOURS OF OPERATION Mon - Fri 8 am - 5 pm	RATES AND INFORMATION Sliding fee scale based on income and funding availability.
REQUIREMENTS FOR TREATMENT Based on assessment	ACCEPTABLE PAYER SOURCES Medicaid, private insurance, self-pay; Funding for uninsured may be available	

Bertie County

Eastern Carolina Family Practice		Dr. Steven Ferguson
CONTACT (252) 332-6484 105 Commerce Street Powellsville, NC 27967	HOURS OF OPERATION Contact provider for more information	RATES AND INFORMATION Self pay Rate: \$300 initial visit \$140 follow up visit
REQUIREMENTS FOR TREATMENT Based on assessment	ACCEPTABLE PAYER SOURCES Self-pay only	

Brunswick County

Brunswick Cardiology		Jeffrey D. Seder, M.D.
CONTACT (910) 755-7192 20 Medical Campus Dr NW Suite 203 Supply, NC 28462	HOURS OF OPERATION Mon - Thurs 8:30 am to 5 pm Fri 8:30 am to 2 pm	RATES AND INFORMATION Self Pay Rates: \$250 Initial visit \$225 Additional for induction \$120 Each follow up
REQUIREMENTS FOR TREATMENT Based on Assessment	ACCEPTABLE PAYER SOURCES Self-pay only	

Coastal Horizons Center		www.coastalhorizons.org
CONTACT (910) 754-4515 120 Coastal Horizons Dr Shallotte, NC 28470	HOURS OF OPERATION Brunswick Hours: Mon - Fri 8 am to 5 pm	RATES AND INFORMATION Sliding fee scale based on income and funding availability
REQUIREMENTS FOR TREATMENT Based on assessment	ACCEPTABLE PAYER SOURCES Medicaid, Medicare, private insurance, self-pay; Funding for uninsured may be available.	

Capeside Psychiatry and Addiction Care		http://capesidepsychiatry.com/
CONTACT (910) 791-6767 12 Medical Center Dr. SW Supply, NC 28462	HOURS OF OPERATION Walk-In Appts: Mon-Fri 8am to 5pm	RATES AND INFORMATION Self Pay Rate: \$360 Initial visit \$40 - \$80 therapy/group
REQUIREMENTS FOR TREATMENT Contact provider for details	ACCEPTABLE PAYER SOURCES Self-pay only	

Coastal Southeastern United Care - Bolivia		Lunsford R. King, M.D. www.coastalunitedcare.org
CONTACT (910) 253-5801 10 Referendum Dr. Suite 115 - Building F Bolivia, NC 28422	HOURS OF OPERATION Contact provider for details	RATES AND INFORMATION Sliding fee scale based on income and funding availability
REQUIREMENTS FOR TREATMENT Based on assessment	ACCEPTABLE PAYER SOURCES Medicaid, self-pay; Funding for uninsured may be available. Contact provider for details.	

Palms Health and Wellness<https://www.palmshealthandwellness.com/>

CONTACT	HOURS OF OPERATION	RATES AND INFORMATION
(910) 754-7155 One Medical Center Dr. Supply, NC 28462	Mon - Thurs 9am-4pm Friday - closed	\$350 initial with MD \$180 follow up

REQUIREMENTS FOR TREATMENT	ACCEPTABLE PAYER SOURCES
Based on assessment	Medicaid, Medicare, Tricare, private insurance, self-pay; Funding for uninsured may be available

Waterford Wellness

Nathan Christie, M.D.

<http://www.waterford-wellness.com/>

CONTACT	HOURS OF OPERATION	RATES AND INFORMATION
(910) 376-8118 1003 Olde Waterford Way, Suite 1-C Leland, NC 28451	Mon-Thurs 10am - 6pm Fri 10am - 2pm	Self Pay Rates: \$300 Initial \$200 follow up

REQUIREMENTS FOR TREATMENT	ACCEPTABLE PAYER SOURCES
One meeting per week minimum	Self-pay only

Carteret County

Arthritis and Rehabilitation Medicine, PLLC		Dr. Kevin McKnight http://arthritisgroup.net/
CONTACT (252) 515-0158 3014 Bridges St Morehead City, NC 28557	HOURS OF OPERATION Mon - Thurs 9am - 430pm Fri 9am - noon	RATES AND INFORMATION \$200 initial \$80 follow-up \$20 urine drug screen
REQUIREMENTS FOR TREATMENT Based on assessment	ACCEPTABLE PAYER SOURCES Medicaid, Medicare, some private insurances, and self-pay	

Carolinas Center for Surgery		Dr. Campbell www.surgicalcenterofmhc.com
CONTACT (252) 773-0614 3714 Guardian Ave Suite W Morehead City, NC 28557	HOURS OF OPERATION Mon - Thurs 7:30 am to 3:30 pm Fri - 7:30 to Noon	RATES AND INFORMATION Self Pay Rates: \$ 500 Initial visit \$170 Each follow-up
REQUIREMENTS FOR TREATMENT Must have referral from Managed Care Organization (MCO) or other medical professional	ACCEPTABLE PAYER SOURCES Medicaid, Medicare, private insurance, self-pay	

PORT Health Services - Morehead City		https://www.porthhealthservices.org/
CONTACT (252) 222-3144 3715 Guardian Ave. Morehead City, NC 28557	HOURS OF OPERATION Mon - Fri 8 am - 5 pm	RATES AND INFORMATION Sliding fee scale based on income
REQUIREMENTS FOR TREATMENT Based on assessment	ACCEPTABLE PAYER SOURCES Medicaid, private insurance, self-pay; Funding for uninsured may be available	

(FMRC) Family Medicine & Rehabilitation Center		http://www.fmrclinics.com/
CONTACT (252) 499-9021 310 Commerce Ave, Suite B Morehead City, NC 28557	HOURS OF OPERATION Contact provider for details	RATES AND INFORMATION Contact provider for details
REQUIREMENTS FOR TREATMENT Contact provider for more information	ACCEPTABLE PAYER SOURCES Medicaid, Medicare, private insurance	

Craven County

DAE Health Services		Dr. Kwasi Foluke http://dae-healthservices.com/
CONTACT (252) 514-2261 3316 Neuse Blvd. New Bern, NC 28560	HOURS OF OPERATION Contact provider for more information	RATES AND INFORMATION Self Pay Rates: \$ 250 initial visit (\$45 deposit) \$ 90-165 Each follow-up
REQUIREMENTS FOR TREATMENT Contact provider for more information	ACCEPTABLE PAYER SOURCES Self-pay only	

Community Wellness Center		Dr. Michael Kermit Nunn http://www.cwcnbnc.com/
CONTACT (252) 633-6636 750 McCarthy Blvd. New Bern, NC 28562	HOURS OF OPERATION Mon-Thurs 9am - 5pm Fri 9am - 3pm	RATES AND INFORMATION Self Pay Rates: \$ 320 Initial visit \$135 Follow-up
REQUIREMENTS FOR TREATMENT Based on assessment	ACCEPTABLE PAYER SOURCES Self-pay only (Will not accept self-pay clients who have Medicaid, Medicare and/or Tricare)	

PORT Health Services - New Bern		https://www.porthhealthservices.org/
CONTACT (252) 633-0157 1309 Tatum Road New Bern, NC 28560	HOURS OF OPERATION Mon - Fri 8 am - 5 pm	RATES AND INFORMATION Sliding fee scale based on income
REQUIREMENTS FOR TREATMENT Based on assessment	ACCEPTABLE PAYER SOURCES Medicaid, private insurance, self-pay; Funding for uninsured may be available	

Dare County

Duck Medical		Dr. Michael Smith
CONTACT (252) 715-3600 110 W Woodhill Dr. Nags Head, NC 27959	HOURS OF OPERATION Mon, Tues, Thurs, Friday	RATES AND INFORMATION Self Pay Rates: \$400 initial (cover the first 3 weekly visits \$125 follow up
REQUIREMENTS FOR TREATMENT Must attend at least two NA meetings/therapy sessions per month	ACCEPTABLE PAYER SOURCES Self-Pay Only	

PORT Health Services - Nags Head		https://www.porthhealthservices.org/
CONTACT (252) 441-2324 2808 S. Croatan Hwy. STE 120 Nags Head, NC 27959	HOURS OF OPERATION Mon - Fri 8 am - 5 pm	RATES AND INFORMATION Sliding fee scale based on income
REQUIREMENTS FOR TREATMENT Based on assessment	ACCEPTABLE PAYER SOURCES Medicaid, private insurance, self-pay; Funding for uninsured may be available	

Right Path		https://rightpathaddictioncenters.com/
CONTACT (252) 986-3100 110 W Woodhill Dr. Nags Head, NC 27959	HOURS OF OPERATION Mon - Fri 8 am - 4 pm	RATES AND INFORMATION Self Pay Rates: \$250 Initial visit \$150 follow up \$25 group
REQUIREMENTS FOR TREATMENT Contact provider for details	ACCEPTABLE PAYER SOURCES Some Private Insurance and Self-Pay	

Halifax County

Roanoke Valley Psychiatric Associates		Dr. Ravinder Mamedi
CONTACT (252) 537-8400 321 NC Highway 125 Roanoke Rapids, NC	HOURS OF OPERATION Mon - Thurs: 8am - 430pm Fri: 8am to 12pm	RATES AND INFORMATION No Self-Pay - Insurance Only
REQUIREMENTS FOR TREATMENT Based on assessment	ACCEPTABLE PAYER SOURCES Medicaid, Medicare, private insurance	

Hertford County

PORT Health Services - Ahoskie		https://www.porthhealthservices.org/
CONTACT (252) 209-8932 144 Community College Rd. Ahoskie, NC 27910	HOURS OF OPERATION Mon - Fri 8 am - 5 pm	RATES AND INFORMATION Sliding fee scale based on income
REQUIREMENTS FOR TREATMENT Based on assessment	ACCEPTABLE PAYER SOURCES Medicaid, private insurance, self-pay; Funding for uninsured may be available	

Martin County

Agape Community Health Center		https://www.agapechc.org/
CONTACT (252) 789-0401 1130 Godwin Ave, Williamston, NC 27892	HOURS OF OPERATION Mon - Fri 8 am - 5 pm On site Pharmacy Mon - Fri *Probuphine is also offered*	RATES AND INFORMATION Contact provider for details.
REQUIREMENTS FOR TREATMENT Based on Assessment	ACCEPTABLE PAYER SOURCES Medicaid, Medicare, Tricare, private insurance, self-pay; Funding for uninsured may be available	

Nash County

Briar Creek Pain and Spine - Rocky Mount		http://www.painandspine.org/index.php
CONTACT (252) 200-5180 121 Enterprise Drive Rocky Mount, NC 27804	HOURS OF OPERATION Mon - Fri 8 am to 5 pm	RATES AND INFORMATION Self Pay Rate: \$320 Each visit
REQUIREMENTS FOR TREATMENT Based on assessment	ACCEPTABLE PAYER SOURCES Medicaid, private insurance, self-pay	

Rocky Mount Treatment Center		
CONTACT (252) 972-4357 104 Zebulon Court Rocky Mount, NC 27804	HOURS OF OPERATION Contact provider for details	RATES AND INFORMATION Self Pay Rates: \$14.50/day OR \$100 if paid weekly
REQUIREMENTS FOR TREATMENT Contact provider for more information	ACCEPTABLE PAYER SOURCES Self-pay only	

New Hanover County

Addictionologist and Pain Management		George Scontsas, M.D.
CONTACT (910) 254-1414 1201 Medical Center Dr Wilmington, NC 28401	HOURS OF OPERATION Mon - Wed 8 am to 4:30 pm Thurs Noon to 4:30 pm	RATES AND INFORMATION Self Pay Rates: \$390 Initial visit \$125 Each follow-up
REQUIREMENTS FOR TREATMENT Contact provider for more information	ACCEPTABLE PAYER SOURCES Medicare, Tricare, private insurance, self-pay	

Anjan Medical, Coastal MD's		Dr. Njapa www.coastalmds.com
CONTACT (910) 793-4311 1098 Medical Center Dr. Suite A Wilmington, NC 28401	HOURS OF OPERATION Contact provider for more information	RATES AND INFORMATION Self Pay Rate: \$350 Initial visit \$150 Each follow-up
REQUIREMENTS FOR TREATMENT Contact provider for more information	ACCEPTABLE PAYER SOURCES Medicaid, Medicare, Tricare, private insurance, self-pay	

Ave Maria Family Practice		Dorothy Mosley, M.D. www.dorothymosleymd.com
CONTACT (910) 799-5452 1230 Medical Center Dr Wilmington, NC 28401	HOURS OF OPERATION Mon - Fri 8 am to 5 pm	RATES AND INFORMATION Self Pay Rate: \$450 Each week
REQUIREMENTS FOR TREATMENT <ul style="list-style-type: none"> • Must attend group 2 times per month • Must list Dr. Mosley as primary care physician 	ACCEPTABLE PAYER SOURCES Medicaid, private insurance, self-pay	

Capeside Psychiatry and Addiction Care		Barry A. Moore, M.D. http://capesidepsychiatry.com/
CONTACT (910) 791-6767 311 Judges Rd Suite 4E Wilmington, NC 28405	HOURS OF OPERATION Walk-In Appts: Mon-Fri 8am to 5pm	RATES AND INFORMATION Self Pay Rate: \$360 Initial visit \$40 - \$80 therapy/group
REQUIREMENTS FOR TREATMENT Contact provider for details	ACCEPTABLE PAYER SOURCES Self-pay only	

Carolina Beach Counseling		http://www.carolinabeachcounseling.com/
CONTACT (910) 458-4544 1328 N Lake Park Blvd #109 Carolina Beach, NC 28428	HOURS OF OPERATION Walk-In Appts: Mon-Fri 8am to 5pm	RATES AND INFORMATION Self Pay Rate: \$360 Initial visit \$40 - \$80 therapy/group
REQUIREMENTS FOR TREATMENT Contact provider for details	ACCEPTABLE PAYER SOURCES Blue Cross Blue Shield, Medicare; self-pay	

Carter Clinic		https://www.kingdom1medicine.com/
CONTACT (910) 550-2332 603 Eastwood Rd, Wilmington, NC 28403	HOURS OF OPERATION Contact provider for details	RATES AND INFORMATION Self Pay Rates: \$235 Initial visit \$160 Each follow up
REQUIREMENTS FOR TREATMENT Based on assessment	ACCEPTABLE PAYER SOURCES Medicaid, self-pay, private insurance; contact provider for details	

Coastal Horizons Center (CHC)		www.coastalhorizons.org
CONTACT (910) 343-0145 615 Shipyard Blvd. Wilmington, NC 28412	HOURS OF OPERATION Mon - Fri 8 am to 4 pm	RATES AND INFORMATION Sliding fee scale based on income and funding availability
REQUIREMENTS FOR TREATMENT Based on assessment	ACCEPTABLE PAYER SOURCES Medicaid, Medicare, private insurance, self-pay; Funding for uninsured may be available	

Haven		Dwight Lysne, M.D. MDiv
CONTACT 20 S 16 th St Wilmington, NC 28401 Ph: (910) 399-3927 Fax: (910) 399-3928	HOURS OF OPERATION Mon - Thursday 9 am to 12 noon (Walk- in)	RATES AND INFORMATION Self Pay Rate: \$300 for the first month \$200/mo for the second 3 months
REQUIREMENTS FOR TREATMENT This program is Christian based. Clients must attend faith based groups daily.	ACCEPTABLE PAYER SOURCES Medicaid, Medicare, self-pay	

New Hanover Metro Treatment Center		www.methadonetreatment.com
CONTACT (910) 251-6644 1611 Castle Hayne Rd, Bld. C Wilmington, NC 28401	HOURS OF OPERATION Open 7 days a week	RATES AND INFORMATION Self Pay Rate: \$16 Daily (costs increases as dosage increases) Rates include counseling and medication
REQUIREMENTS FOR TREATMENT Must attend counseling 2 times monthly	ACCEPTABLE PAYER SOURCES Self-pay only	

Odibo Medical Group		http://odibomedicalgroup.com/
CONTACT P: 910-228-5894 1099 Medical Center Drive, Suite 100 A Wilmington, NC, 28401	HOURS OF OPERATION Mon - Fri 9am to 5pm	RATES AND INFORMATION \$300 for the first visit (plus \$75 for drug screen) \$200 for follow up (please \$75 for drug screen)
REQUIREMENTS FOR TREATMENT Based on Assessment	ACCEPTABLE PAYER SOURCES Medicaid, Medicare, Tricare, private insurance and self-pay	

Pelican Family Medicine		Dr. M. Sam Armitage http://www.pelicanmed.com/
CONTACT (910) 332-7900 5905 Carolina Beach Rd. #8 Wilmington, NC 28412	HOURS OF OPERATION Mon - Fri 830 am to 5 pm	RATES AND INFORMATION Self Pay Rate: \$150-\$180 every two weeks
REQUIREMENTS FOR TREATMENT Contact Provider for more information	ACCEPTABLE PAYER SOURCES Self-pay OR Medicaid if Pelican is Primary Care	

PORT Health Services - Wilmington		https://www.porthhealthservices.org/
CONTACT (910) 763-6499 2206 Wrightsville Ave Wilmington, NC 28403	HOURS OF OPERATION Mon - Fri 8 am to 5 pm	RATES AND INFORMATION Sliding fee scale based on income
REQUIREMENTS FOR TREATMENT Based on assessment	ACCEPTABLE PAYER SOURCES Medicaid, private insurance, self-pay; Funding for uninsured may be available	

Porters Neck Counseling		Jeremy Revell, M.D. www.portersneckcounseling.com
CONTACT (910) 686-3505 8044 Market St. Suite D Wilmington, NC 28411	HOURS OF OPERATION Contact provider for more information	RATES AND INFORMATION Self Pay Rate: \$330 Initial visit \$180 Each follow-up
REQUIREMENTS FOR TREATMENT Contact provider for more information	ACCEPTABLE PAYER SOURCES Medicare, Tricare, private insurance, self-pay	

Reflections of Hope		https://www.reflectionsofhope.info/
CONTACT (910)782-8752 33 Darlington Ave Wilmington, NC 28403	HOURS OF OPERATION Mon - Fri 5:30am to noon Sat-Sun 7am - 10am	RATES AND INFORMATION Self Pay Rates: \$65 admission fee \$18/day for buprenorphine
REQUIREMENTS FOR TREATMENT Must attend at least 2 individual therapy and 2 group sessions per month.	ACCEPTABLE PAYER SOURCES Self-pay Only	

Triad Behavioral Resources		https://www.triadbehavioralresources.com/
CONTACT (910) 765-1003 201 N Front St. Suite 508 Wilmington, NC 28412	HOURS OF OPERATION Contact provider for more information	RATES AND INFORMATION Self Pay Rate: \$300 initial \$125 per week
REQUIREMENTS FOR TREATMENT Contact provider for more information	ACCEPTABLE PAYER SOURCES Private insurance, self-pay, contact provider for more information	

Trinity Wellness Center		Rano Mathew, M.D. www.thetrinitywellnesscenter.com
CONTACT (910) 343-8424 1907 S 17 th St. Suite 1 Wilmington, NC 28401	HOURS OF OPERATION Telemedicine Only	RATES AND INFORMATION Self-Pay Rate: \$230 Initial \$195 Follow-Up
REQUIREMENTS FOR TREATMENT Telemedicine Only and monthly drug screens	ACCEPTABLE PAYER SOURCES Private Insurance, Tricare, self-pay	

Wilmington Treatment Center		www.wilmingtontreatment.com
CONTACT (910) 793-5662 2520 Troy Dr Wilmington, NC 28401	HOURS OF OPERATION Mon - Fri 8:30 to 5 pm	RATES AND INFORMATION Rates for private insurance and other payer sources may vary - contact provider for details
REQUIREMENTS FOR TREATMENT Contact provider for more information	ACCEPTABLE PAYER SOURCES Medicare, private insurance, self-pay	

Onslow County

Capeside Psychiatry and Addiction Care		Barry A. Moore, M.D. http://capesidepsychiatry.com/
CONTACT (910) 238-2744 1703 Country Club Rd Suite 102 Jacksonville, NC 28546	HOURS OF OPERATION Walk-In Appts: Mon-Fri 8am to 5pm	RATES AND INFORMATION Self Pay Rate: \$360 Initial visit \$40 - \$80 therapy/group
REQUIREMENTS FOR TREATMENT Contact provider for more information	ACCEPTABLE PAYER SOURCES Self-pay Only	

Coastal Carolina Neuropsychiatric Center (CCNC)		Dr. Ash Mikhail www.coastalcarolinapsych.com
CONTACT (910) 938-1114 200 Tarpoon Trail Jacksonville, NC 28549	HOURS OF OPERATION Contact provider for more information	RATES AND INFORMATION Contact provider for more information
REQUIREMENTS FOR TREATMENT Must attend group 2 times per month	ACCEPTABLE PAYER SOURCES Medicaid, Medicare, private insurance, self-pay	

Jacksonville Treatment Center		www.jacksonvilletreatmentcenter.com
CONTACT (910) 347-2205 806 Bell Fork Rd. Jacksonville, NC 28540	HOURS OF OPERATION Mon - Fri 6 am to 12 pm Sat 7 am to 9 am Sun 8 am to 10 am	RATES AND INFORMATION Self Pay Rates: \$14.50/day
REQUIREMENTS FOR TREATMENT Must attend group 2 times per month	ACCEPTABLE PAYER SOURCES Self-pay Only	

Palms Wellness Center		Victor R. Barnes, M.D. www.palmswellnesscenter.com
CONTACT (910) 238-4513 472-D Western Blvd Jacksonville, NC 28546	HOURS OF OPERATION Mon - Wed 10am - 6pm	RATES AND INFORMATION \$780 initial \$150 follow up - doctor \$125 follow up - therapy \$180 urine drug screen - each visit
REQUIREMENTS FOR TREATMENT Based on assessment	ACCEPTABLE PAYER SOURCES Blue Cross Blue Shield and self-pay	

Pediatric Urgent Care		Dr. Stanley Taylor Katy Robertson, NP
CONTACT (910) 347-7773 1201 Country Club Rd. Jacksonville, NC 28546	HOURS OF OPERATION Mon - Fri 9 am to 6 pm Closed from 12-1pm	RATES AND INFORMATION Self Pay Rates: \$300 monthly OR \$175 biweekly OR \$125 weekly
REQUIREMENTS FOR TREATMENT Based on assessment	ACCEPTABLE PAYER SOURCES Self-Pay and Medicaid (limited number)	

PORT Health Services - Jacksonville		https://www.porthhealthservices.org/
CONTACT (910) 353-5354 231 Memorial Drive Jacksonville, NC 28546	HOURS OF OPERATION Mon - Fri 8 am to 5 pm	RATES AND INFORMATION Sliding fee scale based on income
REQUIREMENTS FOR TREATMENT Based on assessment	ACCEPTABLE PAYER SOURCES Medicaid, private insurance, self-pay; Funding for uninsured may be available	

Pasquotank County

The Care Centers		Dr. William Bowens http://www.thecarecenters.com/show/William-C-Bowens-Elizabeth-City-NC
CONTACT (252) 338-1100 1825 West City Dr. Suite F Elizabeth City, NC 27909	HOURS OF OPERATION Mon - Thurs 10am - 2pm	RATES AND INFORMATION Self Pay Rates: \$200 Initial visit \$175 Each follow-up
REQUIREMENTS FOR TREATMENT Contact provider for more information	ACCEPTABLE PAYER SOURCES Self-pay Only	

Elizabeth City Treatment Center		https://www.southeasternreatmentcenters.com/
CONTACT (252) 333-1540 105 Medical Center Dr. Elizabeth City, NC 27909	HOURS OF OPERATION Mon-Fri 5:30 am - 2:30 pm, Sat-Sun 6 - 11 am	RATES AND INFORMATION Self-Pay Rates: \$20 per day
REQUIREMENTS FOR TREATMENT Contact provider for more information	ACCEPTABLE PAYER SOURCES Self-Pay Only	

PORT Health Services - Elizabeth City		https://www.porthhealthservices.org/
CONTACT (252) 335-0803 1141 N. Road St. Suite L Elizabeth City, NC 27909	HOURS OF OPERATION Mon - Fri 8 am - 5 pm	RATES AND INFORMATION Sliding fee scale based on income
REQUIREMENTS FOR TREATMENT Based on assessment	ACCEPTABLE PAYER SOURCES Medicaid, private insurance, self-pay; Funding for uninsured may be available	

Pitt County

Briar Creek Pain and Spine - Greenville		http://www.painandspine.org/index.php
CONTACT (252) 317-1195 1970 W. Arlington Blvd Greenville, NC 27834	HOURS OF OPERATION Contact provider for more information	RATES AND INFORMATION Self Pay Rates: \$ 320 per visit
REQUIREMENTS FOR TREATMENT Contact provider for more information	ACCEPTABLE PAYER SOURCES Medicaid, private insurance, Tricare, self-pay	

Greenville Psychiatric Associates		
CONTACT (252) 758-4810 502-A Red Banks Road Greenville, NC 27858	HOURS OF OPERATION Contact provider for more information	RATES AND INFORMATION Self Pay Rates: \$ 150 - Initial MD \$ 95 - therapy with MD \$ 50/per med check \$125 - Initial therapist \$ 40-60/follow up for therapy \$ 15 Urine Drug Screen
REQUIREMENTS FOR TREATMENT Based on assessment	ACCEPTABLE PAYER SOURCES Medicare, Tricare, private insurance, self-pay	

PORT Health Services - Greenville		https://www.porthhealthservices.org/
CONTACT (252) 752-0483 2602 Courtier Drive Greenville, NC 27834	HOURS OF OPERATION Mon - Fri 6 am - 5 pm	RATES AND INFORMATION Sliding fee scale based on income
REQUIREMENTS FOR TREATMENT Based on assessment	ACCEPTABLE PAYER SOURCES Medicaid, private insurance, self-pay; Funding for uninsured may be available	

PORT Health Services - Winterville		https://www.porthhealthservices.org/
CONTACT (252) 353-1114 154 Sapphire Court Suite I Winterville, NC 28590	HOURS OF OPERATION Mon - Fri 8 am - 5 pm	RATES AND INFORMATION Sliding fee scale based on income
REQUIREMENTS FOR TREATMENT Based on assessment	ACCEPTABLE PAYER SOURCES Medicaid, private insurance, self-pay; Funding for uninsured may be available	

Buprenorphine Providers (Surrounding Counties)

Columbus County

RHA		
CONTACT (910) 640-1400 603 Pecan Ln. Whiteville, NC	HOURS OF OPERATION Mon - Fri 8 am to 5 pm	RATES AND INFORMATION Contact provider for details
REQUIREMENTS FOR TREATMENT Based on assessment	ACCEPTABLE PAYER SOURCES Medicaid, Medicare, some private insurance, self-pay; Funding for uninsured may be available	

Briar Creek Pain and Spine - Whiteville		http://www.painandspine.org/index.php
CONTACT (910) 207- 6417 612 Jefferson St Whiteville, NC 28472	HOURS OF OPERATION Mon - Fri 8 am to 5 pm	RATES AND INFORMATION Self Pay Rate: \$320 Each visit
REQUIREMENTS FOR TREATMENT Based on assessment	ACCEPTABLE PAYER SOURCES Medicaid, private insurance, self-pay	

Lenior County

PORT Health Services - Kinston		https://www.porthhealthservices.org/
CONTACT (252) 233-2383 2901 N Heritage St Kinston, NC 28501	HOURS OF OPERATION Mon - Fri 8 am to 4 pm	RATES AND INFORMATION Sliding fee scale based on income
REQUIREMENTS FOR TREATMENT Based on assessment	ACCEPTABLE PAYER SOURCES Medicaid, private insurance, self-pay; Funding for uninsured may be available	

(FMRC) Family Medicine & Rehabilitation Center		http://www.fmrclinics.com/
CONTACT (252) 208-7800 (919) 679-2600 Ext 2 2601 North Heritage St. Kinston, NC 28501	HOURS OF OPERATION Contact Provider for details	RATES AND INFORMATION Contact provider for details
REQUIREMENTS FOR TREATMENT Contact provider for more information	ACCEPTABLE PAYER SOURCES Medicaid, Medicare, private insurance	

Lori Scott Family Care		Dr. Lori Scott
CONTACT (252) 686-0920 400 Glenwood Ave Suite 11 Kinston, NC 28	HOURS OF OPERATION Mon, Wed, Thurs, Fri: 930am - 130pm Tues: 1230am - 430pm	RATES AND INFORMATION \$200 per month
REQUIREMENTS FOR TREATMENT Based on assessment	ACCEPTABLE PAYER SOURCES Self-Pay Only	

Wayne County

CRC Health - Carolina Treatment Center of Goldsboro		http://www.sandhillsctc.com/location/goldsboro/
CONTACT (919) 583-9329 1700 E. Ash St. Suite 201 Goldsboro, NC 27530	HOURS OF OPERATION Mon-Sat 5am to 2pm Sun 5am to 7am	RATES AND INFORMATION Self Pay Rates: \$275 per month, plus the cost of medication
REQUIREMENTS FOR TREATMENT Contact provider for more information	ACCEPTABLE PAYER SOURCES Self-pay and some private insurances	

(FMRC) Family Medicine & Rehabilitation Center		http://www.fmrclinics.com/
CONTACT (919) 679-2600 Ext3 or (919) 751-5900 2902 Central Heights Rd. Ste A-C Goldsboro, NC 27534	HOURS OF OPERATION Contact Provider for details	RATES AND INFORMATION Contact provider for details
REQUIREMENTS FOR TREATMENT Contact provider for more information	ACCEPTABLE PAYER SOURCES Medicaid, Medicare, private insurance	

Wayne Family Medical Center		
CONTACT (919) 734-3999 2807 McLamb Pl Goldsboro, NC 27534	HOURS OF OPERATION Contact Provider for details	RATES AND INFORMATION Self Pay Rates: \$350 initial \$150 follow up
REQUIREMENTS FOR TREATMENT Contact provider for more information	ACCEPTABLE PAYER SOURCES Medicaid, Medicare, private insurance, Tricare, Self-Pay	

South Carolina (Horry County)

The Center of Hope of Myrtle Beach		www.carolinatreatmentcenters.com
CONTACT (843) 903- 6212 104 George Bishop Parkway Myrtle Beach, SC 29579	HOURS OF OPERATION Mon - Fri 5 am to 12 pm Sat - 6 am to 10 am	RATES AND INFORMATION Self Pay Rates: \$13 Each visit \$80 Per week <ul style="list-style-type: none">• Price will increase as dosage increases• Price includes counseling and medication
REQUIREMENTS FOR TREATMENT Contact provider for more information	ACCEPTABLE PAYER SOURCES Self-pay only	

Naloxone Distribution and Syringe Exchange

North Carolina Harm Reduction Coalition (NCHRC)

Services: Syringe Exchange Program, Biohazard Collection, Naloxone Access, Overdose Prevention Training, Injection Drug User Health Peer Support, Sex Worker Health Peer Support, Detox Referrals, Treatment Referrals, Hepatitis C Education and Referrals, Advocacy, Legal Information on Harm Reduction Laws and Advocacy

North Carolina Harm Reduction Coalition (NCHRC) - Wilmington:

Mobile Phones 9am-5pm Monday- Friday: (910) 795-7984 (910) 354-0035

Wilmington Office Based Syringe Exchange:

Tuesdays 11am-5pm,

Wednesdays: 10am-Noon

Fridays: 1pm-5pm

Address: NCHRC - 3953-A Market St., Building B, Wilmington, NC, 28403

Wilmington Wednesday Night Street Outreach 4pm-8pm:

P:(910) 795-7984 ask for Mike - Mike leads night harm reduction outreach to drug users and sex workers and provides risk reduction services.

Brunswick County On Demand Harm Reduction Services:

(910) 795-7984 ask for Mike (*No calls 10pm-8am*)

OTHER INFO:

Harm Reduction Support Group for Active and Retired Users: Tuesdays 6pm-8pm, contact Mike to join (910) 795-7984

Off hours/Weekend Naloxone/Syringe Access/Biohazard Collection: Text/Call (910) 795-7984 (*No calls 10pm-8am*)

In NORTH CAROLINA, free overdose rescue kits are only available to the following groups of people; active IV drug users, people on medication-assisted treatment, people who are formerly incarcerated with a history of opiate use, people engaged in sex work or people who identify as transgender

FOR MORE INFORMATION GO TO: <http://www.nchrc.org/programs-and-services/>

All services are *free* for adults, NCHRC will only serve people who are 18+

Introduction to Resources for Pregnant Women

Recent studies have shown a sharp rise in the incidence of opioid exposed pregnancies. There are many risks associated for opioid-dependent pregnant women and special consideration and treatment is required. As such, this supplemental resource guide has been developed to support stakeholders including those from medical, behavioral health, child welfare, and criminal justice fields, who are working with women and their substance-exposed infants in the Trillium Health Resources catchment area. This guide includes information on resources and opioid use disorder treatment options for pregnant women.

For additional information on services and supports for opiate use, or other substance use disorders, please contact Trillium Health Resources at 1-877-685-2415. For resources specific to pregnant women with an active substance use disorder please contact Trillium and ask to speak with Mary Bartek or Michelle Stanley at P: 1-866-998-2597.

****Information included is subject to change. This document will be updated periodically to reflect changes. Please contact individual organizations for provider availability, appointment times and information on required documentation prior to visit.****

Additional Resources for Pregnant Women

NCPOEP TOOLKIT

As the rate of opioid-exposed pregnancies has continued to rise it was determined that a guidance document was needed for people working with these women and their families in North Carolina. The North Carolina Pregnancy and Opioid Exposure Project (NCPOEP) brought together stakeholders from around the state to develop a guide. This document identifies best practices for professionals in North Carolina and contains comprehensive resources and information. The document can be found on the NCPOEP website at the following link:

http://ncpoep.org/wp-content/uploads/2015/03/NCPOEP_toolkit.pdf

Pregnancy and Opioid Exposure Guidance Document

The purpose of this document is to support the use of best practices by professionals in North Carolina. State, national, and international organizations working with women and their substance-exposed infants have concluded that the most effective public health approaches are those that support healthy outcomes for the mother and baby.

<http://www.ncpoep.org/guidance-document/>

North Carolina Perinatal and Maternal Substance Use Project

This link contains publications and information on programs for women who are pregnant, post-partum, or women with children that require a residential level of substance abuse treatment. Services typically include substance use disorder treatment, life skills training, parenting education, child care, and transportation. Bed availability along with additional information can be found at the following link:

<http://www.nchealthystart.org/services-and-programs/perinatal-substance-use-project/>

Additional information can also be obtained by contacting the Program Coordinator, Judith Johnson- Hostler, MA, LCAS at: 1-800-688-4232 or by e-mail at jjones@alcoholdrughelp.org

Community Care of North Carolina: Management of Substance Use in Pregnancy

The benefits of the pregnant woman's behavioral change have proven to be effective in improving birth outcomes for the newborn. The American College of Obstetrics and Gynecology recommends that providers use a protocol for screening, brief intervention and referral to treatment as an evidence-based approach to addressing substance use in their practice. Below are key recommendations for incorporating this into the Pregnancy Medical Home setting.

<https://www.communitycarenc.org/media/files/pmh-sa-pathway.pdf>

<https://www.communitycarenc.org/media/files/pmh-su-pathway-summary-recs.pdf>

<https://www.communitycarenc.org/media/files/pmh-su-pathway-summary-recs-appendix.pdf>

Additional Resources

Regional Referral Form (for admission to a State Psychiatric Hospital or ADATC)

https://www2.ncdhhs.gov/dsohf/professionals/Regional_Referral_Form_2014.pdf

ADATC - Walter B. Jones

Admissions Coordinator p:(252) 707-5009 fax:(252) 707-5279

Lab work needed (for pregnant women) for ADATC referrals:

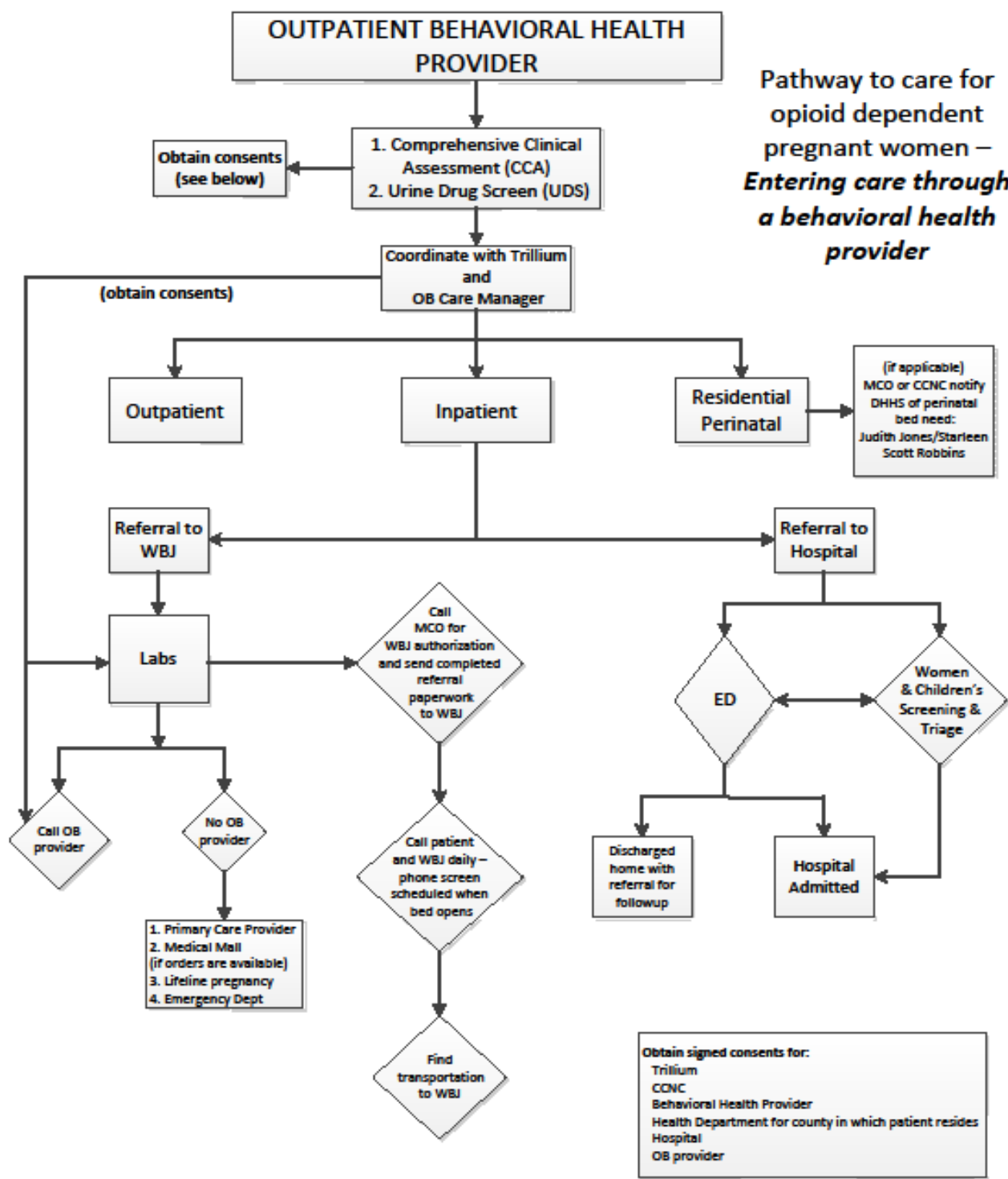
- | | |
|---|--|
| 1) Complete Blood Count (CBC) with differential | 4) Breathalyzer or Blood Alcohol Level |
| 2) Comprehensive metabolic panel | 5) EKG |
| 3) Urine drug screen | 6) Ultrasound |

If induction of opioid replacement therapy will be done at WBJ, the applicant will need a “letter of intent” from a provider stating they will continue the applicant on methadone/suboxone/subutex after completion of the WBJ program. This letter will be required prior to WBJ admission.

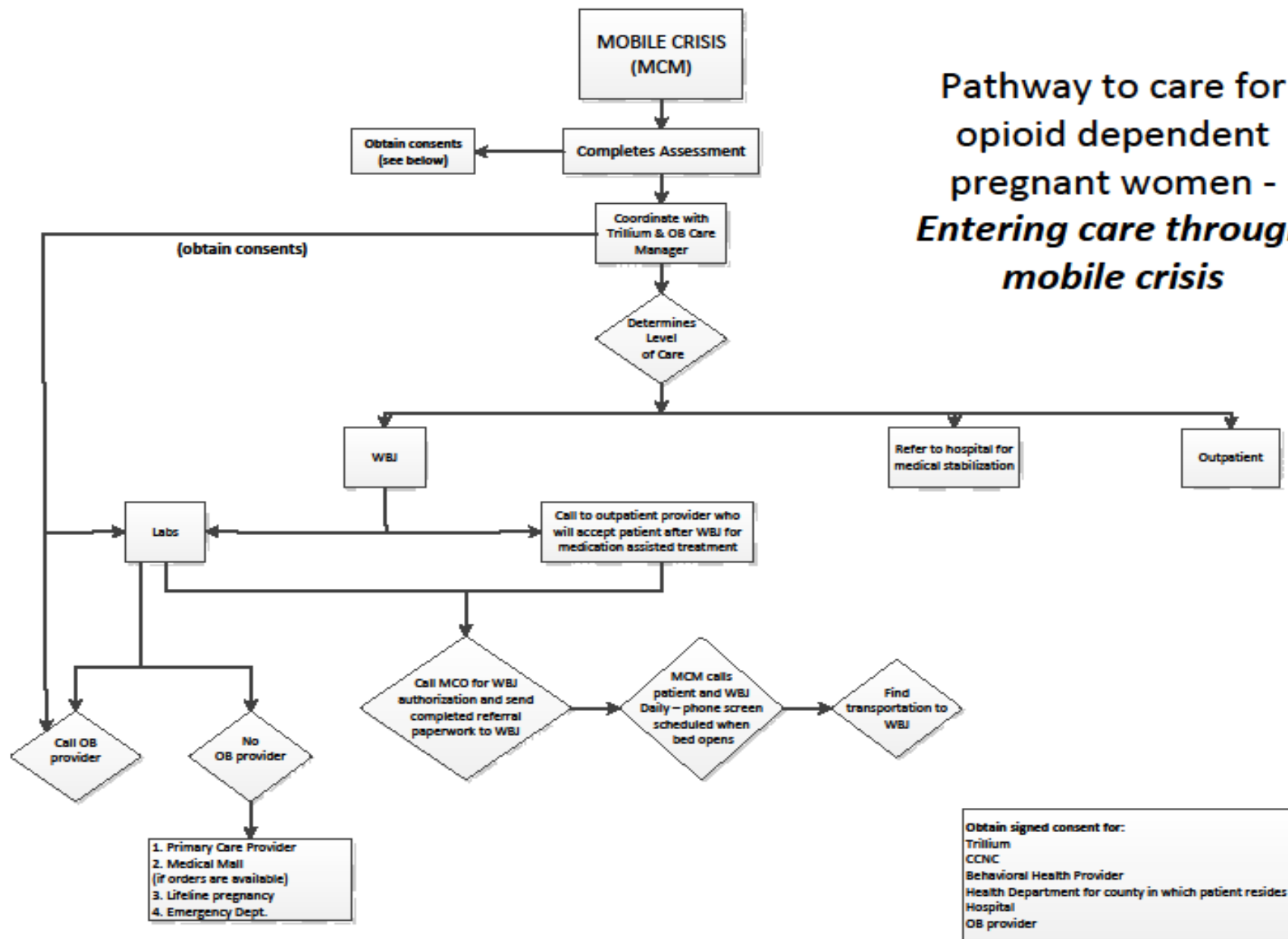
Mobile Crisis

Mobile Crisis Teams work for Network Providers who contract with Trillium. Teams are made up of experienced clinical staff well-trained in crisis prevention and stabilization techniques. When a person experiences a behavioral health crisis, a member of the Mobile Crisis Team will respond and meet the person wherever it may be--at home, at school, at work or in the community. If you or a loved one is experiencing a mental health or substance use crisis, please call the Mobile Crisis Team serving your county listed below. Services are available 24 hours a day, 7 days a week.

Counties Trillium Covers					Mobil Crisis Team
Beaufort	Carteret	Gates	Nash	Pender	Integrated Family Services, PLLC 1.866.437.1821
Brunswick	Chowan	Hyde	New Hanover	Perquimans	
Bertie	Currituck	Hertford	Northampton	Pitt	
Camden	Dare	Martin	Onslow	Tyrrell	
			Pasquotank	Washington	
Brunswick	Craven	New	Pamlico		RHA Health Services, Inc. 1-844-709-4097
Carteret	Jones	Hanover	Pender		
		Onslow			



Pathway to care for opioid dependent pregnant women - *Entering care through mobile crisis*



Disclaimer:

Every effort has been made to ensure the accuracy of the information contained. The information provided in this document is intended for informational purposes only and is subject to change without notice. Please contact each listed provider agency in order to obtain the most current and accurate information.