

NEED FOR DRUG AND ALCOHOL RECOVERY PROGRAM

Alcohol and other drug addictions take a terrible toll. On those who suffer with it, of course, but also on their families. And on the criminal justice system, the healthcare system, the education system. It's an expensive problem, not only in dollars but in lost lives.

In Eastern North Carolina, the situation is especially dire.

THE COLD, HARD NUMBERS



35,141

NUMBER OF UNINSURED/
UNTREATED ADULTS IN
EASTERN NC WITH A DRUG
AND ALCOHOL PROBLEM¹

25,616

NUMBER OF UNINSURED/
UNTREATED ADULTS
IN NEED OF TREATMENT²

7,748

NUMBER OF DUI
ARRESTS IN 2015³

THE COSTS TO SOCIETY

\$80²⁰

AVERAGE COST TO
INCARCERATE ONE INMATE
FOR ONE DAY


\$1,500

AVERAGE COST OF ONE
VISIT TO AN EMERGENCY
DEPARTMENT⁴

>\$6^{MILLION}

THE COST FOR 4,047
EMERGENCY ROOM VISITS
FOR DRUG OVERDOSES
BETWEEN 2010 AND 2013⁴

THE GOOD NEWS



There is a program
that is not only
remarkably successful,
but also extremely
cost effective.



>70%

GRADUATES IN RECOVERY,
GAINFULLY EMPLOYED, AND
IN STABLE HOUSING FOR
MORE THAN ONE YEAR

<\$45

COST PER DAY PER RESIDENT
(A FRACTION OF
HOSPITALIZATION OR
INCARCERATION)

**DID YOU
KNOW?**

SUBSTANCE ABUSE KILLS MORE THAN CANCER, DIABETES, AND HEART DISEASE COMBINED

Called The Healing Place, it's a recovery program unlike any other in the country. Trillium Health Resources is helping to bring it to Eastern North Carolina.

PITT
COUNTY



0

number of long-term residential facilities for substance use disorder in Eastern NC

ABOUT THE ORGANIZATION

The Healing Place was first established in Louisville, Kentucky, in 1989. Because it's based on a social model — it's about empowerment rather than entitlement — it is

5x

more effective than the national average at helping people to recovery.



THE HEALING PLACE

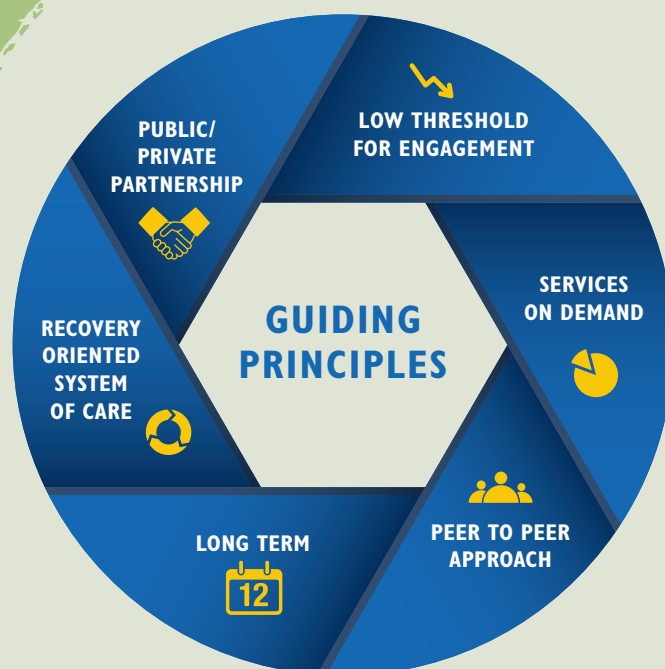
NEW HANOVER
COUNTY



The Healing Place is open to everyone and provides underserved adults who suffer from alcohol and other drug problems with a program to restore them to a healthy life.

THE HEALING PLACE OFFERS:

- Non-medical Detoxification
- Residential Alcohol and Drug Services
- Transitional Living



HELPING PEOPLE FIND THEIR WAY BACK

The Healing Place is defined by three essential elements:

- 1 A curriculum that educates clients about their disease.
- 2 The Community Model that inspires responsibility and caring.
- 3 Peer mentoring to share experiences with others beginning the program.



Sources: ¹ Trillium Health Resources NC Needs & Gaps Report, sfy15 ² N.C. DHHS, Division of Medical Assistance. CCNC/CA Monthly Enrollment Reports, sfy15 ³ N.C. Department of Transportation, Division of Motor Vehicles, Traffic Records Branch ⁴ BCBSNC 2013